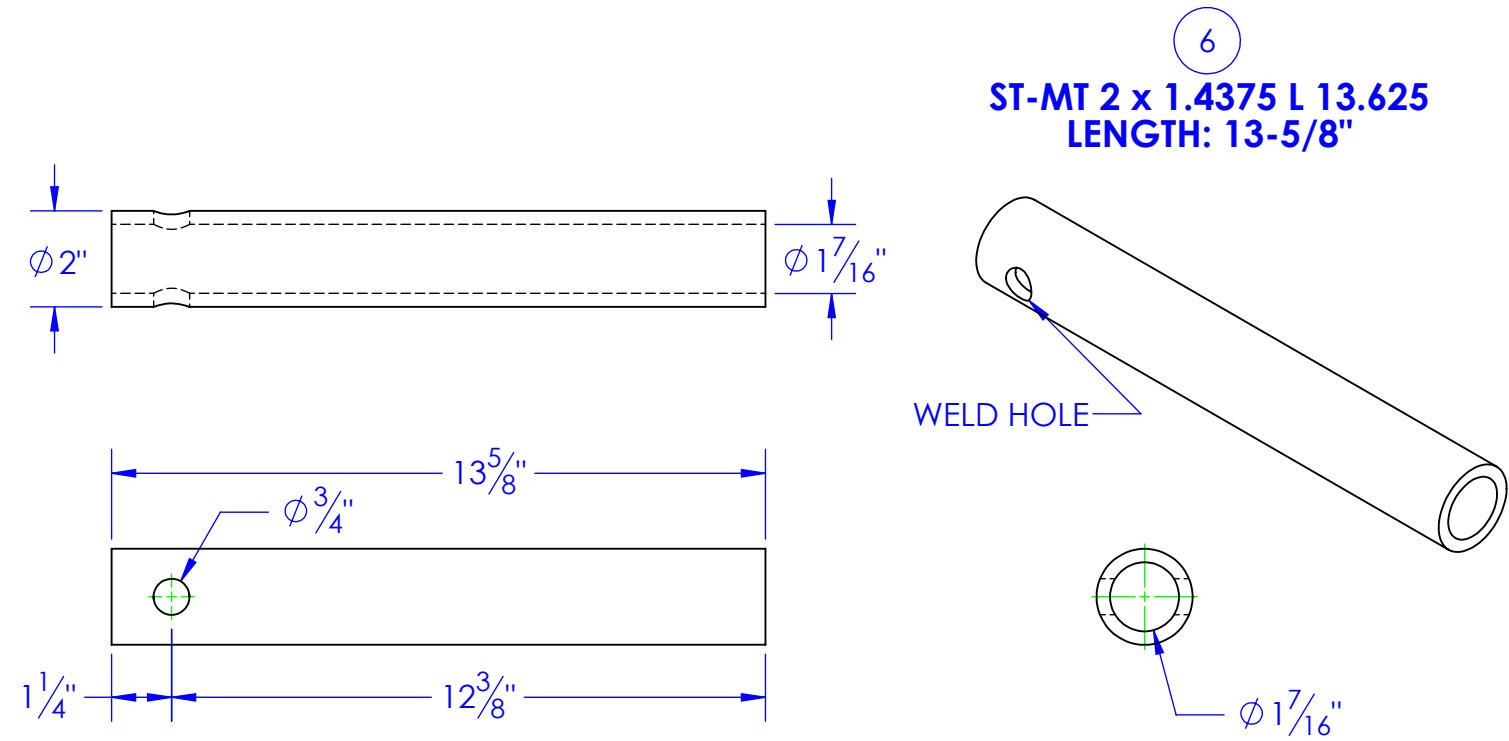
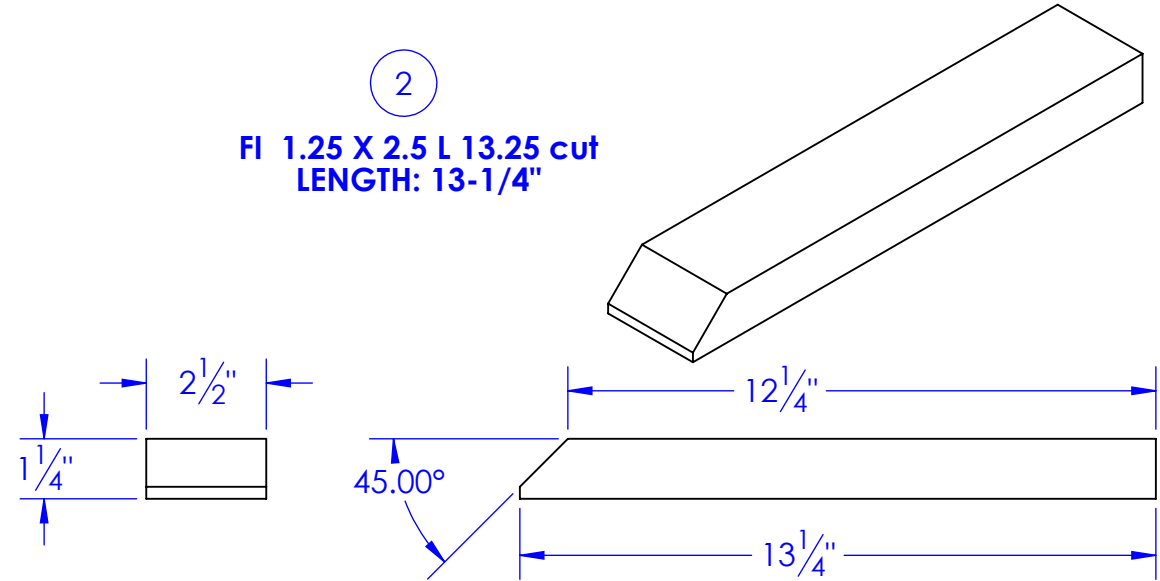
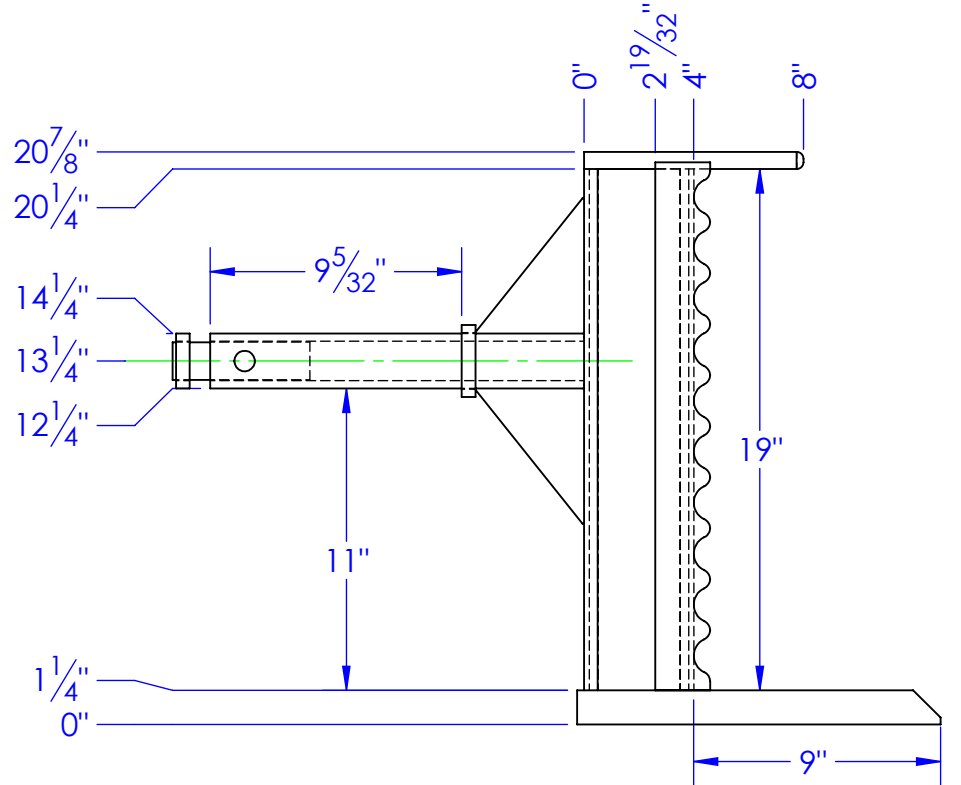
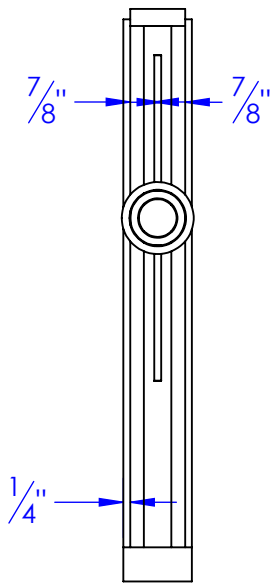
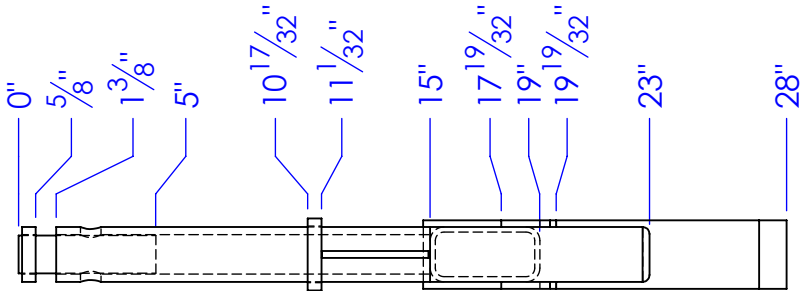
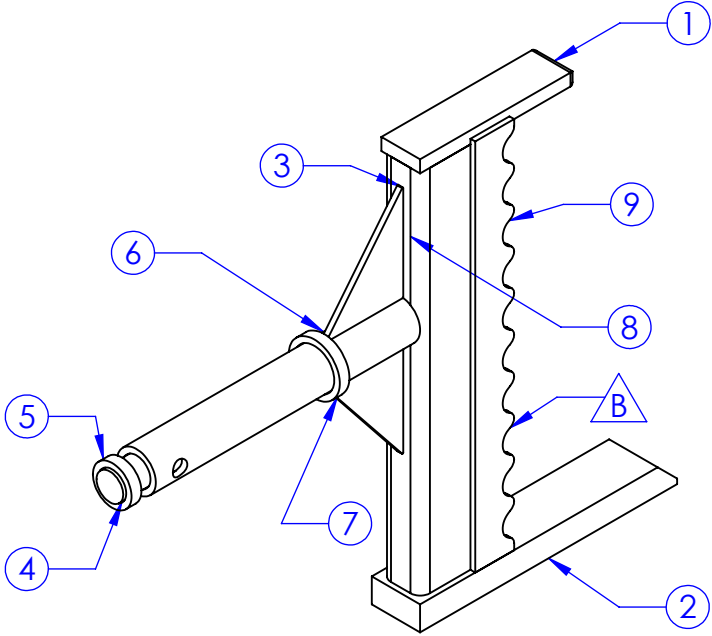


ITEM NO.	PART NUMBER	DESCRIPTION	DRAWING #	QTY.
1	FI .625 x 2 L 8	LENGTH: 8"	STOCK	1
2	FI 1.25 X 2.5 L 13.25 cut	LENGTH: 13-1/4"	STOCK	1
3	FP-SP118A-3	GUSSET, SPINNER 5x4	90-1602	2
4	ST-CR 1.375 O.D. L 5	LENGTH: 5"	STOCK	1
5	ST-MT 2 x 1.4375 L .5	LENGTH: 1/2"	STOCK	1
6	ST-MT 2 x 1.4375 L 13.625	LENGTH: 13-5/8"	STOCK	1
7	ST-MT 2.625 x 2.0625 L .5	LENGTH: 1/2"	STOCK	1
8	RT 4x2x.25 L 19	LENGTH: 19"	STOCK	1
9	RD-AE-RRTS-PG	RAILROAD TIE SPINNER PIPE GUSSET		2



USED IN PART # S
OP-AE-RRTS-50 & 100



PROPRIETARY AND CONFIDENTIAL
THE INFORMATION CONTAINED IN THIS
DRAWING IS THE SOLE PROPERTY OF
<INSERT COMPANY NAME HERE>. ANY
REPRODUCTION IN PART OR AS A WHOLE
WITHOUT THE WRITTEN PERMISSION OF
<INSERT COMPANY NAME HERE> IS
PROHIBITED.

UNLESS OTHERWISE SPECIFIED:
DIMENSIONS ARE IN INCHES
TOLERANCES:
FRACTIONAL ± 1/16
ANGULAR: MACH ± 1 BEND ±
TWO PLACE DECIMAL ± 0.01
THREE PLACE DECIMAL ± 0.005
MATERIAL
DO NOT SCALE DRAWING

DRAWN	NAME	DATE	P.O. BOX 248, SABETHA KS. 66534 (785) 284-3674 FAX (785) 284-3931		
PART #	HEATH	7/30/2012	TRIPLE C INC.		
ASM #	--				
COMMENTS:	OP-AE-RRTS-SPINNER				
RAILROAD TIE ARM SPINNER			SIZE B	DWG. NO. 90-1314 B	REV B
			SCALE: 1:7	WEIGHT: 39.27	SHEET 1 OF 1